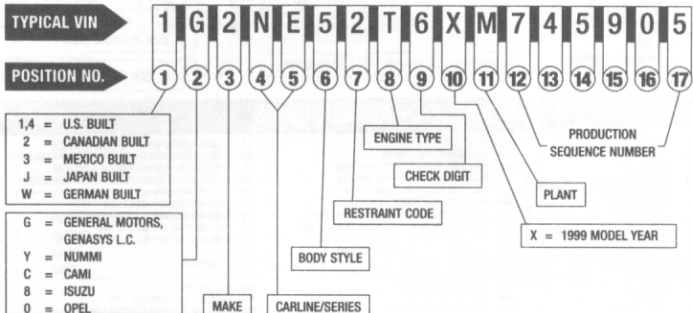




1999 PASSENGER CAR VIN SYSTEM



3 MAKE

- | | | |
|------------------|----------------------|------------------|
| 1 - CHEVROLET | 5 - ELECTRIC VEHICLE | 6 - CADILLAC |
| 2 - PONTIAC | | 7 - GM OF CANADA |
| 3 - OLDSMOBILE | | 8 - SATURN |
| 3 - TOYOTA (4G3) | | |
| 4 - BUICK | | |

4-5 CARLINE/SERIES

- | | |
|--|----------------------------|
| CHEVROLET | BUICK |
| F/P - CAMARO SPORT COUPE & CONV. | C/U - PARK AVENUE-ULTRA |
| J/C - CAVALIER | C/W - PARK AVENUE |
| J/F - CAVALIER Z24, SEDAN & CONV. | G/D - RIVIERA |
| J/G - TOYOTA (COUPE & SEDAN) | H/P - LE SABRE CUSTOM |
| J/H - TOYOTA (COUPE & SEDAN) | H/R - LE SABRE LIMITED |
| M/R - METRO | W/B - REGAL LS |
| N/D - MALIBU SEDAN | W/F - REGAL GS |
| N/E - MALIBU LS SEDAN | W/L - SAIC1 (REGAL GL) |
| S/K - PRIZM | W/S - CENTURY CUSTOM |
| W/L - LUMINA | W/Y - CENTURY LIMITED |
| W/N - LUMINA LTZ | CADILLAC |
| W/W - MONTE CARLO LS | E/L - ELDORADO |
| W/X - MONTE CARLO Z34 | E/T - ELDORADO TOURING |
| Y/Y - CORVETTE | K/D - DEVILLE |
| | K/E - DEVILLE D'ELEGANCE |
| | K/F - CONCOURS (DEVILLE) |
| | K/S - SLS |
| PONTIAC | K/Y - STS |
| F/S - FIREBIRD & CONV. | W/R - CATERA |
| F/N - FORMULA & CONV. | |
| H/X - BONNEVILLE SE | SATURN |
| H/Z - SSE | Z/E - SC1 COUPE MANUAL |
| J/B - SUNFIRE & CONV. | Z/F - SC1 COUPE |
| J/D - SUNFIRE | - SL SEDAN |
| N/E - GRAND AM SE | Z/G - SC2 COUPE |
| N/W - GRAND AM GT | - SW1 WAGON |
| W/J - GRAND PRIX SE | - SL1 SEDAN MANUAL |
| W/P - GRAND PRIX GT | Z/H - SC2 COUPE |
| W/R - GRAND PRIX GTP | - SW1 WAGON |
| | - SL1 SEDAN AUTO |
| OLDSMOBILE | Z/J - SW2 WAGON |
| G/R - AURORA | - SL2 SEDAN MANUAL |
| H/C - EIGHTY EIGHT 50TH ANNIV. EDITION | Z/K - SW2 WAGON |
| H/N - EIGHTY EIGHT | - SL2 SEDAN AUTO |
| H/Y - LSS | Z/M - SW1 WAGON RHD |
| N/B - CUTLASS LEVEL I | Z/N - SC1 COUPE RAD |
| N/G - CUTLASS LEVEL II | Z/P - SC1 COUPE RAD |
| N/F - ALERO GLS | Z/R - SC2 COUPE RAD |
| N/K - ALERO GX | Z/Y - SC2 COUPE RAD |
| N/L - ALERO GL | |
| W/H - INTRIGUE GX | GM ELECTRIC VEHICLE |
| W/S - INTRIGUE GL | P/X - EV ₁ |
| W/X - INTRIGUE GLS | GM OF CANADA |
| | M/R - FIREFLY |

6 BODY STYLE (GM STYLE)

- | |
|-----------------------------------|
| 1 TWO-DOOR COUPE (27, 37, 47, 57) |
| 2 TWO-DOOR (07, 08, 77, 87) |
| 3 TWO-DOOR CONVERTIBLE (67) |
| 5 FOUR-DOOR SEDAN (19, 69) |
| 6 FOUR-DOOR SEDAN (29, 68) |
| 8 FOUR-DOOR STATION WAGON (35) |

7 RESTRAINT CODES

- | |
|---|
| 2 ACTIVE (MANUAL) BELTS W/DRIVER & PASSENGER INFLATABLE RESTRAINT SYSTEM (FRONTAL) |
| 4 ACTIVE (MANUAL) BELTS W/DRIVER & PASSENGER INFLATABLE RESTRAINT SYSTEM (FRONTAL & SIDE) |

8 ENGINE TYPE

CODE	ENG. OPT.	DISP.	CYL.	FUEL* SYSTEM	DIV. USAGE	PROD. IN*
C	L47	4.0L	V8	MFI	3	U
E	LA1	3.4L	V6	MFI	1,2,3	U
G	LS1	5.7L	V8	MFI	1,2	U
H	LX5	3.5L	V6	MFI	3	U
J	LG8	3.1L	V6	SFI	1,3	U
K	L36	3.8L	V6	MFI	1,2,3,4	U
M	L82	3.1L	V6	MFI	1,2,3,4	U,M
R	L81	3.0L	V6	MFI	6	G
T	LD9	2.4L	L4	MFI	1,2,3,BJ	U
1	L67	3.8L	V6	MFI	2,3,4	U
2	LY8	1.3L	L4	MFI	1,7	J
4	LN2	2.2L	L4	MFI	1,2	U
5	LN1	102KW	312V	ELECTRIC	GMEV	U
6	LP2	1.0L	L3	TBI	1	J
7	LL0	1.9L	L4	MFI	8	U
8	LV6	1.8L	L4	MFI	1	J
8	L24	1.9L	L4	MFI	8	U

*LEGEND

- | | |
|-------------|---------------------------------|
| U = U.S. | MFI = MULTIPOINT FUEL INJECTION |
| C = CANADA | SFI = SEQUENTIAL FUEL INJECTION |
| J = JAPAN | TBI = THROTTLE BODY INJECTION |
| G = GERMANY | BJ = TOYOTA BADGED J-CAR |
| M = MEXICO | |

11 PLANT

B - BALTIMORE (T&B)	MD	F - FLINT (T&B)	MI	S - RAMOS ARIZPE	MEXICO	1 - OSHAWA (T&B)	ON	6 - INGERSOLL	ON
B - LANSING (GENASYS)	MI	G - SILAO	MEXICO	T - SHREVEPORT	LA	1 - OSHAWA #2	ON	6 - OKLAHOMA CITY	OK
C - LANSING	MI	H - FLINT	MI	U - HAMTRAMCK	MI	1 - WENTZVILLE (T&B)	MO	7 - LORSTOWN	OH
C - CHARLOTTE (T&B)	MI	J - JANESVILLE (T&B)	WI	Y - WILMINGTON	DE	2 - MORAINE (T&B)	OH	7 - FLUJAWA	JAPAN
D - DORAVILLE	GA	K - LINDEN (T&B)	NJ	Z - FREMONT	CA	2 - STE THERESE	PO	8 - SHREVEPORT	LA
E - PONTIAC EAST (T&B)	MI	M - LANSING	MI	Z - SPRING HILL	TN	3 - DETROIT (T&B)	MI	(T&B)	
F - FAIRFAX II	KS	M - TOLUCA	MEXICO	Z - FORT WAYNE (T&B)	IN	3 - KAWASAKI	JAPAN	8 - TILLSONBURG	ON
		R - ARLINGTON (T&B)	TX			4 - ORION	MI	(CANEXPO)	
		R - RUSSELSEHEIM	GER	O - LANSING	MI	5 - BOWLING GREEN	KY	9 - OSHAWA #1	ON

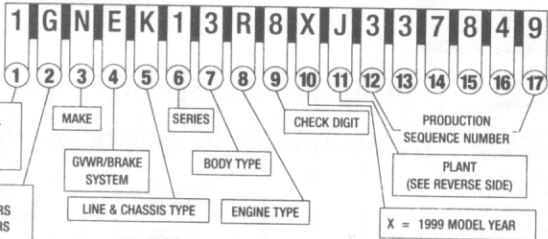
The information shown is correct at time of printing, but may be changed during model year.

GM

1999 LIGHT DUTY TRUCK, MULTIPURPOSE PASSENGER VEHICLE (MPV) AND INCOMPLETE VEHICLE VIN SYSTEM

TYPICAL VIN

POSITION NO.



1, 4 = U.S. BUILT
2 = CANADIAN BUILT
3 = MEXICO BUILT

C = CAMI
G = GENERAL MOTORS
S = SPARTAN MOTORS
8 = ISUZU

3 MAKE

A - CHEV BUS *
B - CHEV INCOMPLETE
C - CHEV TRUCK
D - GMC INCOMPLETE, OPEL, VAUXHALL
E - CADILLAC INCOMPLETE
G - ISUZU INCOMPLETE
H - OLDSMOBILE MPV
J - GMC BUS *
K - GMC MPV
L - BUICK INCOMPLETE
M - PONTIAC MPV
N - CHEV MPV
T - GMC TRUCK
Y - CADILLAC MPV
9 - SPARTAN MOTOR HOME
* VAN WITH 4TH SEAT

4 GVWR/BRAKE SYSTEM

CODE	GVWR RANGE (IN POUNDS)	BRAKE SYSTEM
B	3001 - 4000	HYD
C	4001 - 5000	HYD
D*	5001 - 6000	HYD
E**	6001 - 7000	HYD
F**	7001 - 8000	HYD
G	8001 - 9000	HYD
H	9001 - 10000	HYD
J	10001 - 14000	HYD
K	14001 - 16000	HYD
L	16001 - 19500	HYD
M	19501 - 26000	AIR/HYD

* BUICK & CHEVROLET COMMERCIAL BODY/CHASSIS
**CADILLAC COMMERCIAL BODY/CHASSIS

5 LINE & CHASSIS TYPE

B - SPECIAL BODY (BUICK OR CHEVROLET) 4 x 2
C - CONVENTIONAL CAB* 4 x 2
D - MILITARY TRUCK 4 x 4
E - COMPACT CAB/ELECTRIC TRUCK (FWD) - SMALL CONVENTIONAL CAB 4 x 2
G - VAN ** 4 x 2
H - CHASSIS CUTAWAY OR COMMERCIAL SPECIAL BODY FROM CAD. PASS CAR 4 x 2
J - CONVENTIONAL CAB* 4 x 4
K - SMALL VAN *** 4 x 4
L - SMALL VAN *** 4 x 2
M - FORWARD CONTROL 4 x 2
P - FORWARD CONTROL 4 x 2
S - SMALL CONVENTIONAL CAB* 4 x 2
T - SMALL CONVENTIONAL CAB* 4 x 4
U - ALL PURPOSE VEHICLE (APV) 4 x 2
X - ALL PURPOSE VEHICLE (EXT) 4 x 2

* INCLUDING BLAZER, JIMMY, SUBURBAN, TAHOE, YUKON, BRAVADA AND ESCALADE
**INCLUDES CHEVROLET VANS, EXPRESS VAN, COMMERCIAL CUTAWAY, RV CUTAWAY AND GMC SAVANA CARGO, PASSENGER, SPECIAL AND CAMPER SPECIAL
***INCLUDES ASTRO AND SAFARI VANS.

6 SERIES

0 - ALL PURPOSE VEHICLE
1 - 1/2 TON
2 - 3/4 TON
3 - 1 TON
4 - REAR ENGINE CHASSIS
5 - 3 TON (MEX ONLY)
9 - SPECIAL CADILLAC, BUICK & CHEVROLET COMMERCIAL BODY/CHASSIS

7 BODY TYPE

0 - CHASSIS ONLY
0 - CADILLAC, BUICK & CHEVROLET COMMERCIAL BODY/CHASSIS
1 - COMMERCIAL, SPECIAL & RV CUTAWAY*
2 - FORWARD CONTROL
3 - FOUR-DOOR CAB/UTILITY
3 - FOUR-DOOR ALL PURPOSE VEHICLE
4 - TWO-DOOR CAB
5 - VAN
6 - ALL PURPOSE VEHICLE
6 - SUBURBAN
7 - MOTOR HOME CHASSIS
8 - TWO-DOOR UTILITY
9 - EXTENDED CAB/VAN

* INCLUDES GMC SAVANA SPECIAL AND CAMPER SPECIAL

8 ENGINE TYPE

CODE	C	E	F	H	J	L	M	R	T	U	V	W	X	Y*	4	6	9*	
ENGINE OPTION	L34	LA1	L65	LN1	L29	LH3	L30	L31	LM7	LQ4	LR4	L35	LF6	LD8	L57	LN2	LO1	L37
DISPL. (L)	2.0	3.4	6.5T	85KW	7.4	4.1	5.0	5.7	5.3	6.0	4.8	4.3	4.3	4.6	6.5	2.2	1.6	4.6
CYLINDERS	L4	V6	V8	312V	V8	L6	V8	V8	V8	V8	V6	V6	V6	V8	V8	L4	L4	V8
FUEL SYSTEM **	MFI	MFI	DSL	ELECTRIC	MFI	MFI	CPI	CPI	MFI	MFI	MFI	CPI	CPI	MFI	DSL	MFI	MFI	MFI
PRODUCED IN **	J	U	U	U	U	M	U	U	U	U	U	U	U	U	U	U	J	U

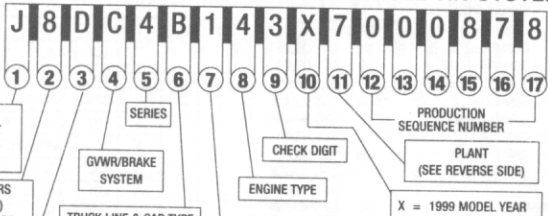
* USED ONLY IN BUICK, CHEVROLET & CADILLAC PASSENGER CAR - DERIVED INCOMPLETE VEHICLES.

** LEGEND: U = U.S., J = JAPAN, M = MEXICO, DSL = DIESEL, MFI = MULTIPOINT FUEL INJECTION, CPI = CENTRAL PORT INJECTION, T = TURBO

1999 MEDIUM DUTY TRUCK AND INCOMPLETE VEHICLE VIN SYSTEM

TYPICAL VIN

POSITION NO.



1, 4 = U.S. BUILT
2 = CANADIAN BUILT
3 = MEXICAN BUILT
J = JAPAN BUILT

G = GENERAL MOTORS
K = ISUZU (U.S. Built)
8 = ISUZU (Japan Built)

B = CHEV INCOMPLETE
C = CHEV TRUCK
D = GMC INCOMPLETE
T = GMC TRUCK

4 GVWR/BRAKE SYSTEM

CODE	GVWR RANGE (IN POUNDS)	BRAKE SYST.
A	9001 - 10,000	HYD
B	10,001 - 14,000	HYD
C	14,001 - 16,000	HYD
D	14,001 - 16,000	AIR
E	16,001 - 19,500	HYD
F	16,001 - 19,500	AIR
G	19,501 - 23,500	HYD
H	19,501 - 23,500	AIR
J	23,501 - 26,000	HYD
K	23,501 - 26,000	AIR
L	26,001 - 33,000	HYD
M	26,001 - 33,000	AIR
N	33,001 - 40,500	HYD
P	33,001 - 40,500	AIR
R	40,501 - 48,500	HYD
S	40,501 - 48,500	AIR
T	48,501 - 58,000	AIR
V	58,001 - 69,500	AIR
X	GLIDER KIT	—

5 SERIES

4 - 4500 SERIES (W4)
5 - 5000 SERIES (C5/W5)
6 - 6000 SERIES (C6/FB6/W6)
7 - 7000 SERIES (B7/C7/D7/FB7/W7)

7 CHASSIS TYPE

0 - GLIDER KIT
1 - 4 X 2 (2 AXLES-1 DRIVING)
4 - 6 X 4 (3 AXLES-2 DRIVING)

6 TRUCK LINE & CAB TYPE (MODEL)

A - FORWARD/TILTMASTER MEDIUM, TILT, 72.0 BBC (W5)
B - FORWARD/TILTMASTER MEDIUM, TILT, 67.9 BBC (W4)
C - T55-T85 MEDIUM, TILT, 86.0 BBC (F6/F7)
D - C SERIES, (SPECIAL EQ/PT OPTION CREW CAB (C7)
H - C SERIES CONVENTIONAL CAB, 106.75 BBC (C6/C7)
T - BUS/COMMERCIAL CHASSIS COM. (B7)
BBC = BUMPER TO BACK OF CAB

8 ENGINE TYPE

B - GM 7.4L V8 MFI GASOLINE (L21)
C - CAT 7.2L L6 TURBO ELECTRONIC (LG5)
D - GM 7.4L V8 MFI GASOLINE (LP4)
F - GM 6.5L V8 TURBO DIESEL (L65)
J - CAT 6.6L 3116 DIESEL (LX0)
R - GM 5.7L V8 CPI GASOLINE (L31)
X - GLIDER KIT LESS ENGINE
2 - ISUZU 7.1L 6HE1TC DIESEL (LN4)
3 - ISUZU 7.8L V6 D-I TURBO DIESEL (LG4)